



ISSUE:

Issued for Permit
08.05.2016

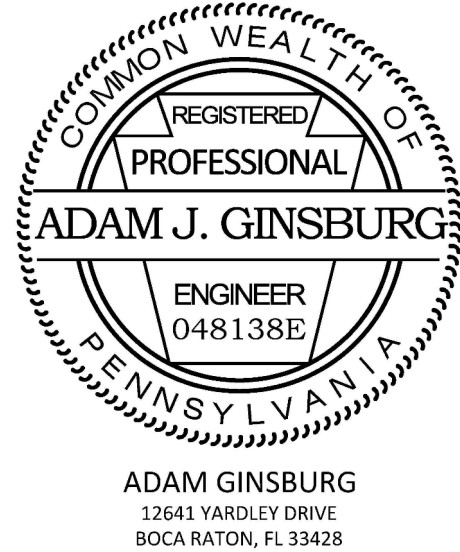


BASE4

BASE4
9858 GLADES ROAD, #237
BOCA RATON, FLORIDA 33434
1.720.72BASE4 www.base-4.com

JEFF GAITHER, AIA
4101 Woodlyne Ln
Orlando, FL 32812

Seal:



PROJECT: B4-067-1603

Hampton Inn & Suites

New Stanton, PA 15672

OWNER:

Stanton Hospitality LLC

52 Blueberry Lane,
Grove City, PA 16127

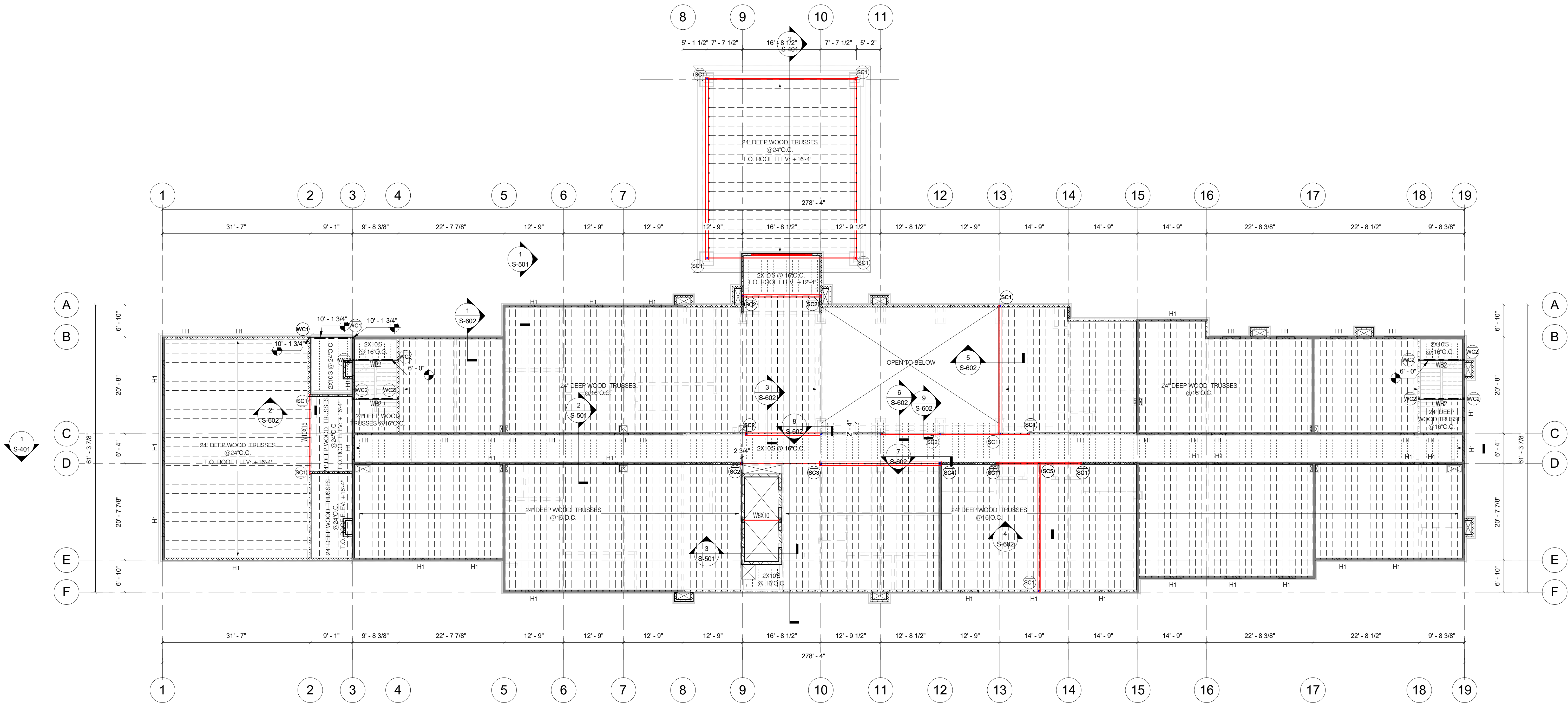
THESE DRAWINGS ARE FOR REVIEW OF DESIGN AND SCOPE DESCRIPTION ONLY. NO REPRESENTATION IS MADE TO THE ACCURACY OF THE DRAWINGS WITH RESPECT TO EXISTING DIMENSIONS OR CONDITIONS. ALL CONSULTANTS AND CONTRACTORS MUST VERIFY ANY AND ALL DIMENSIONS AND CONDITIONS WHICH ARE CRITICAL TO THEIR WORK. THESE DRAWINGS ARE INSTRUMENTS OF SERVICE AND ARE THE INTELLECTUAL PROPERTY OF JMAC ARCHITECTS. ANY UNAUTHORIZED USE OR REPRODUCTION IS PROHIBITED.

No.	Issue Date	Project Status
-----	------------	----------------

2ND FLOOR FRAMING
PLAN

3/32" = 1'-0"

S-202.2



2ND FLOOR FRAMING PLAN

SCALE: 3/32"=1'-0"

NOTES:

- REFER TO ARCH. & MEP FOR OPENING DIMENSIONS ON THIS FLOOR.
- ELEVATION OF 2ND FINISH FLOOR IS 12'-4" U.N.O.
- 1.5 B 22 LIGHT GAUGE METAL DECKING FASTENED IN A 36/3 PATTERN (WITH #12 TEK SCREWS @ 6" O.C. TO ALL PERIMETER SIDE SUPPORTS AND END SUPPORTS AND (6) # 10 TEK SCREW PER SPAN @ SIDE LAPS).